

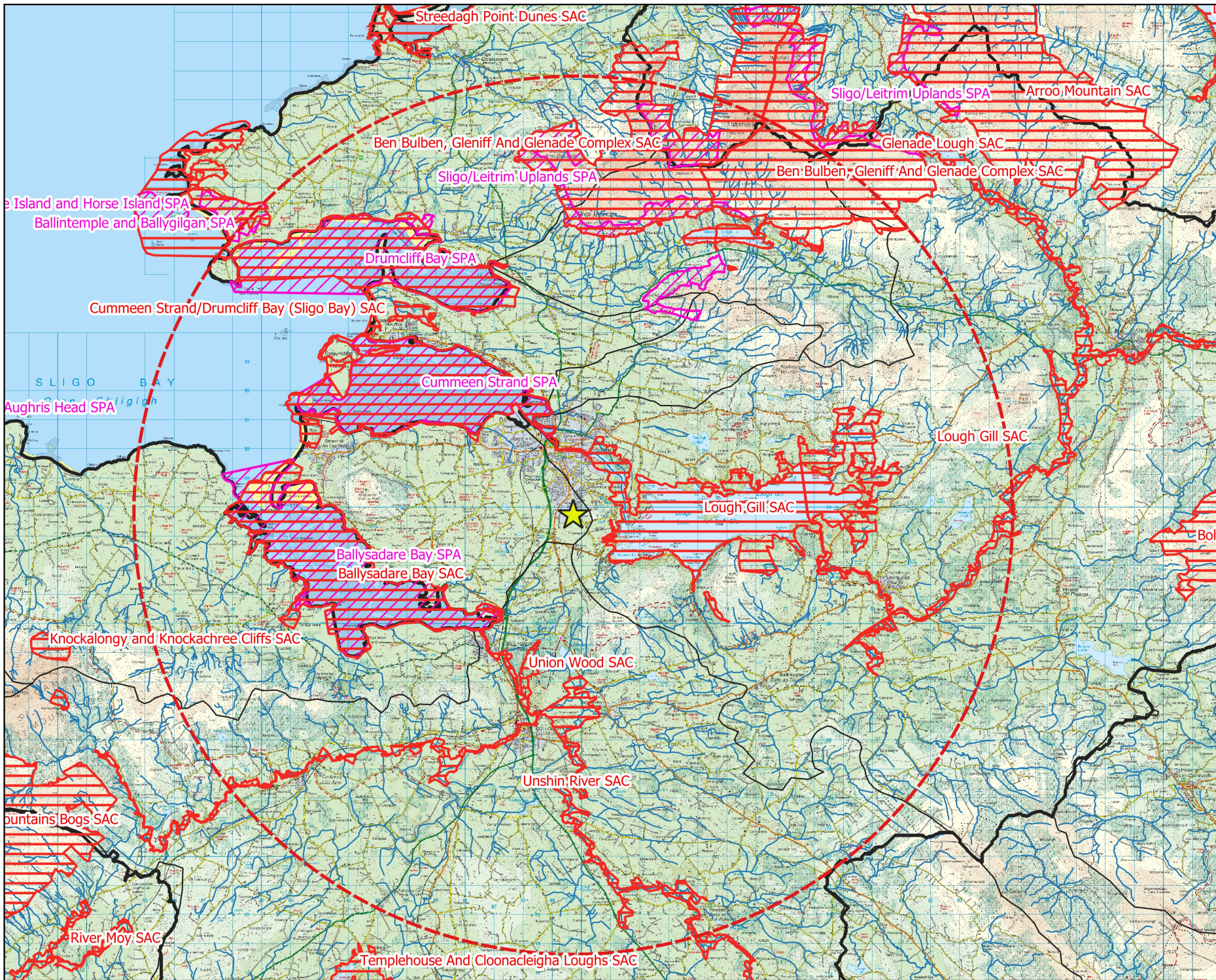
### 3. IDENTIFICATION OF RELEVANT EUROPEAN SITES








#### 3.1 Identification of the European Sites within the Likely Zone of Impact

The following methodology was used to establish which European Sites are within the Likely Zone of Impact of the proposed development:

- Initially the most up to date GIS spatial datasets for European designated sites and water catchments were downloaded from the NPWS website ([www.npws.ie](http://www.npws.ie)) and the EPA website ([www.epa.ie](http://www.epa.ie)) on the 03.03.2022. The datasets were utilized to identify European Sites which could feasibly be affected by the proposed development.
- All European Sites within a distance of 15km surrounding the development site were identified and are shown on Figure 3.1. In this case, no potential for impact on sites located at a distance of over 15km from the proposed development was identified due to the nature and scale and of the proposed development.
- Catchment mapping was used to establish or discount potential hydrological connectivity between the site of the proposed development and any European Sites.
- In relation to Special Protection Areas, in the absence of any specific European or Irish guidance in relation to such sites, the Scottish Natural Heritage (SNH) Guidance, '*Assessing Connectivity with Special Protection Areas (SPA)*' (2016) was consulted. This document provides guidance in relation to the identification of connectivity between proposed development and Special Protection Areas. The guidance takes into consideration the distances species may travel beyond the boundary of their SPAs and provides information on dispersal and foraging ranges of bird species which are frequently encountered when considering plans and projects.
- Table 3-1 I provides details of all relevant European Sites as identified in the preceding steps and assesses which are within the likely Zone of Impact. The assessment considers any likely direct or indirect impacts of the proposed development, both alone and in combination with other plans and projects, on European Sites by virtue of the following criteria: size and scale, land-take, distance from the European Site or key features of the site, resource requirements, emissions, excavation requirements, transportation requirements and duration of construction, operation and decommissioning were considered in this screening assessment.
- The site synopses and conservation objectives of these sites, as per the NPWS website ([www.npws.ie](http://www.npws.ie)), were consulted and reviewed at the time of preparing this report 03.03.2022. Figure 3.1 shows the location of the proposed development in relation to all European Sites within 15km of the proposed development.
- Where potential pathways for Significant Effect are identified, the site is included within the Likely Zone of Impact and considered in the Screening Assessment.





- ### Map Legend
-  Site Location
  -  15k Buffer
  -  Special Areas of Conservation (SAC)
  -  Special Protection Areas (SPA)
  -  River Waterbodies (WFD)
  -  Catchments (WFD)
  -  SubCatchments (WFD)



Ordnance Survey Ireland Licence No. AR  
0021820 © Ordnance Survey Ireland/  
Government of Ireland

Drawing Title  
**EU Designated Sites within 15Km**

Project Title  
**Cairns Road, Co. Sligo**

Drawn By: **RG**      Checked By: **PE**

Project No: **210937**      Drawing No: **Fig 3.1**

Scale: **1:170000**      Date: **02.03.22**



**MKO**  
Planning and Environmental Consultants  
Tuam Road, Galway  
Ireland, H91 WW84  
+353 (0) 91 735611  
email: info@mkofireland.ie  
Website: www.mkofireland.ie



Table 3-1 Identification of Designated Sites within the Likely Zone of Impact

European Sites and distance from proposed development	Qualify Interests/Special Conservation Interests for which the European site has been designated (Sourced from NPWS online Conservation Objectives, www.npws.ie on the 03/03/22	Conservation Objectives	Likely Zone of Impact Determination
<b>Special Areas of Conservation (SAC)</b>			
<p>Lough Gill SAC [001976]</p> <p><b>Distance to site:</b> 1.2km</p>	<p><b>Habitats</b></p> <ul style="list-style-type: none"> <li>➤ Natural eutrophic lakes with <i>Magnopotamion</i> or <i>Hydrocharition</i> - type vegetation [3150]</li> <li>➤ Semi-natural dry grasslands and scrubland facies on calcareous substrates (Festuco-Brometalia) (* important orchid sites) [6210]</li> <li>➤ Old sessile oak woods with <i>Ilex</i> and <i>Blechnum</i> in the British Isles [91A0]</li> <li>➤ Alluvial forests with <i>Alnus glutinosa</i> and <i>Fraxinus excelsior</i> (Alno-Padion, Alnion incanae, Salicion albae) [91E0]</li> </ul> <p><b>Species</b></p>	<p>Detailed conservation objectives for this site (Version 1, December, 2021<sup>2</sup>) were reviewed as part of the assessment and are available at:</p> <p><a href="https://www.npws.ie/sites/default/files/protected-sites/conservation_objectives/CO001976.pdf">https://www.npws.ie/sites/default/files/protected-sites/conservation_objectives/CO001976.pdf</a></p>	<p>There will be no direct impact on the SAC as it is located entirely outside of the footprint of the proposed developmental site.</p> <p>Due to the intervening distance, the nature and the scale of the proposed works, no potential for indirect effects on the following terrestrial QIs for which the SAC has been designated exists:</p> <ul style="list-style-type: none"> <li>➤ Semi-natural dry grasslands and scrubland facies on calcareous substrates (<i>Festuco-Brometalia</i>) (* important orchid sites) [6210]</li> <li>➤ Old sessile oak woods with <i>Ilex</i> and <i>Blechnum</i> in the British Isles [91A0]</li> </ul> <p>There are no watercourses within or adjacent to the site and no suitable habitat for otter; therefore there is no pathway for potential disturbance related effects on this species.</p> <p>The proposed development site partially shares the same hydrological sub-catchment as the SAC. Taking a</p>

<sup>2</sup> NPWS (2021) Conservation Objectives: Lough Gill SAC 001976. Version 1. National Parks and Wildlife Service, Department of Housing, Local Government and Heritage.

European Sites and distance from proposed development	Qualify Interests/Special Conservation Interests for which the European site has been designated (Sourced from NPWS online Conservation Objectives, www.npws.ie on the 03/03/22	Conservation Objectives	Likely Zone of Impact Determination
	<ul style="list-style-type: none"> <li>➤ White-clawed Crayfish (<i>Austropotamobius pallipes</i>) [1092]</li> <li>➤ Sea Lamprey (<i>Petromyzon marinus</i>) [1095]</li> <li>➤ Brook Lamprey (<i>Lampetra planeri</i>) [1096]</li> <li>➤ River Lamprey (<i>Lampetra fluviatilis</i>) [1099]</li> <li>➤ Salmon (<i>Salmo salar</i>)[1106]</li> <li>➤ Otter (<i>Lutra lutra</i>) [1355]</li> </ul>		<p>precautionary approach, a potential pathway for indirect effects was identified in the form of deterioration of water quality resulting from pollution associated with the construction and operational phases of the development. Deterioration of water quality may result in adverse effects on the following aquatic and groundwater influenced QIs within this SAC in the absence of mitigation:</p> <ul style="list-style-type: none"> <li>➤ Natural eutrophic lakes with Magnopotamion or Hydrocharition - type vegetation [3150]</li> <li>➤ Alluvial forests with <i>Alnus glutinosa</i> and <i>Fraxinus excelsior</i> (<i>Alno-Padion</i>, <i>Alnion incanae</i>, <i>Salicion albae</i>) [91E0]</li> <li>➤ White-clawed Crayfish (<i>Austropotamobius pallipes</i>) [1092]</li> <li>➤ Sea Lamprey (<i>Petromyzon marinus</i>) [1095]</li> <li>➤ Brook Lamprey (<i>Lampetra planeri</i>) [1096]</li> <li>➤ River Lamprey (<i>Lampetra fluviatilis</i>) [1099]</li> <li>➤ Salmon (<i>Salmo salar</i>)[1106]</li> <li>➤ Otter (<i>Lutra lutra</i>) [1355]</li> </ul> <p>The SAC is considered to be <i>within</i> the Likely Zone of Impact and further assessment is required with regard to the above listed QIs of the SAC.</p>



European Sites and distance from proposed development	Qualify Interests/Special Conservation Interests for which the European site has been designated (Sourced from NPWS online Conservation Objectives, www.npws.ie on the 03/03/22	Conservation Objectives	Likely Zone of Impact Determination
<p>Cummeen Strand/Drumcliff Strand (Sligo Bay) SAC [000627]</p> <p><b>Distance to site:</b> 2.3km</p>	<p><b>Habitats</b></p> <ul style="list-style-type: none"> <li>➤ Estuaries [1130]</li> <li>➤ Mudflats and sandflats not covered by seawater at low tide [1140]</li> <li>➤ Embryonic shifting dunes [2110]</li> <li>➤ Shifting dunes along the shoreline with <i>Ammophila arenaria</i> (white dunes) [2120]</li> <li>➤ Fixed coastal dunes with herbaceous vegetation (grey dunes) [2130]</li> <li>➤ <i>Juniperus communis</i> formations on heaths or calcareous grasslands [5130]</li> <li>➤ Semi-natural dry grasslands and scrubland facies on calcareous substrates (Festuco-Brometalia) (* important orchid sites) [6210]</li> <li>➤ Petrifying springs with tufa formation (Cratoneurion) [7220]</li> </ul>	<p>Detailed conservation objectives for this site (Version 1, September, 2013<sup>3</sup>) were reviewed as part of the assessment and are available at:</p> <p><a href="https://www.npws.ie/sites/default/files/protected-sites/conservation_objectives/CO000627.pdf">https://www.npws.ie/sites/default/files/protected-sites/conservation_objectives/CO000627.pdf</a></p>	<p>There will be no direct impact on the SAC as it is located entirely outside of the footprint of the proposed developmental site.</p> <p>Due to the intervening distance, the nature and the scale of the proposed works, no potential for indirect effects on the following terrestrial QIs for which the SAC has been designated exists:</p> <ul style="list-style-type: none"> <li>➤ Embryonic shifting dunes [2110]</li> <li>➤ Shifting dunes along the shoreline with <i>Ammophila arenaria</i> (white dunes) [2120]</li> <li>➤ Fixed coastal dunes with herbaceous vegetation (grey dunes) [2130]</li> <li>➤ <i>Juniperus communis</i> formations on heaths or calcareous grasslands [5130]</li> <li>➤ Semi-natural dry grasslands and scrubland facies on calcareous substrates (Festuco-Brometalia) (* important orchid sites) [6210]</li> </ul> <p>No potential connectivity or pathway for effect has been identified from the proposed development to the terrestrial sand dune habitat of the Narrow-mouthed Whorl Snail (<i>Vertigo angustior</i>) as identified as</p>

<sup>3</sup> NPWS (2013) Conservation Objectives: Cummeen Strand/Drumcliff Bay (Sligo Bay) SAC 000627. Version 1. National Parks and Wildlife Service, Department of Arts, Heritage and the Gaeltacht.

European Sites and distance from proposed development	Qualify Interests/Special Conservation Interests for which the European site has been designated (Sourced from NPWS online Conservation Objectives, www.npws.ie on the 03/03/22	Conservation Objectives	Likely Zone of Impact Determination
	<p><b>Species</b></p> <ul style="list-style-type: none"> <li>➤ Narrow-mouthed Whorl Snail (<i>Vertigo angustior</i>) [1014]</li> <li>➤ Sea Lamprey (<i>Petromyzon marinus</i>) [1095]</li> <li>➤ River Lamprey (<i>Lampetra fluviatilis</i>) [1099]</li> <li>➤ Harbour Seal (<i>Phoca vitulina</i>) [1365]</li> </ul>		<p>occurring within the south-westernmost area of Sligo Bay within Map 7 of the Conservation Objectives document. There is therefore no pathway for effect in relation this species.</p> <p>This SAC partially shares the same catchment as the proposed development. Taking a precautionary approach, a potential pathway for indirect effects was identified in the form of deterioration of water quality resulting from pollution associated with the construction and operational phases of the development. Deterioration of water quality may result in adverse effects on the following QI in the absence of mitigation:</p> <ul style="list-style-type: none"> <li>➤ Mudflats and sandflats not covered by seawater at low tide [1140]</li> <li>➤ Estuaries [1130]</li> <li>➤ Petrifying springs with tufa formation (Cratoneurion) [7220]</li> <li>➤ Sea Lamprey (<i>Petromyzon marinus</i>) [1095]</li> <li>➤ River Lamprey (<i>Lampetra fluviatilis</i>) [1099]</li> <li>➤ Harbour Seal (<i>Phoca vitulina</i>) [1365]</li> </ul> <p><b>The SAC is considered to be <i>within</i> the Likely Zone of Impact and further assessment is required with regard to the above listed QI of the SAC.</b></p>



European Sites and distance from proposed development	Qualify Interests/Special Conservation Interests for which the European site has been designated (Sourced from NPWS online Conservation Objectives, www.npws.ie on the 03/03/22	Conservation Objectives	Likely Zone of Impact Determination
<p>Ballysadare Bay SAC [000622]</p> <p><b>Distance to site:</b> 4.0km</p>	<p><b>Habitats</b></p> <ul style="list-style-type: none"> <li>➤ Estuaries [1130]</li> <li>➤ Mudflats and sandflats not covered by seawater at low tide [1140]</li> <li>➤ Embryonic shifting dunes [2110]</li> <li>➤ Shifting dunes along the shoreline with <i>Ammophila arenaria</i> (white dunes) [2120]</li> <li>➤ Fixed coastal dunes with herbaceous vegetation (grey dunes) [2130]</li> <li>➤ Humid dune slacks [2190]</li> </ul> <p><b>Species</b></p> <ul style="list-style-type: none"> <li>➤ Narrow-mouthed Whorl Snail (<i>Vertigo angustior</i>) [1014]</li> <li>➤ Harbour Seal (<i>Phoca vitulina</i>) [1365]</li> </ul>	<p>Detailed conservation objectives for this site (Version 1, August 2016<sup>4</sup>) were reviewed as part of the assessment and are available at:</p> <p><a href="https://www.npws.ie/sites/default/files/protected-sites/conservation_objectives/CO000440.pdf">https://www.npws.ie/sites/default/files/protected-sites/conservation_objectives/CO000440.pdf</a></p>	<p>There will be no direct impact on the SAC as it is located entirely outside of the footprint of the proposed development.</p> <p>Due to the intervening distance, the nature and the scale of the proposed works, there is no potential for indirect effects on the terrestrial habitats for which the SAC has been designated.</p> <p>No potential connectivity or pathway for effect has been identified from the proposed development to the terrestrial sand dune habitat of the Narrow-mouthed Whorl Snail (<i>Vertigo angustior</i>) as identified as occurring within the north-western area of the bay within Map 7 of the Conservation Objectives document. There is therefore no pathway for effect in relation this species.</p> <p>The development site does not provide supporting habitats for harbour seal. Therefore, there is no potential for <i>in situ</i> disturbance of any QI species.</p>

<sup>4</sup> NPWS (2013) Conservation Objectives: Ballysadare Bay SAC 000622. Version 1. National Parks and Wildlife Service, Department of Arts, Heritage and the Gaeltacht.

European Sites and distance from proposed development	Qualify Interests/Special Conservation Interests for which the European site has been designated (Sourced from NPWS online Conservation Objectives, www.npws.ie on the 03/03/22	Conservation Objectives	Likely Zone of Impact Determination
			<p>This SAC is located within the same catchment as the proposed development. Taking a precautionary approach, a potential pathway for indirect effects was identified in the form of deterioration of water quality resulting from pollution associated with the construction and operational phases of the development. Deterioration of water quality may result in adverse effects on the following QI in the absence of mitigation:</p> <ul style="list-style-type: none"> <li>➤ Estuaries [1130]</li> <li>➤ Mudflats and sandflats not covered by seawater at low tide [1140]</li> <li>➤ Harbour Seal (<i>Phoca vitulina</i>) [1365]</li> </ul> <p><b>The SAC is considered to be <i>within</i> the Likely Zone of Impact and further assessment is required with regard to the above listed QI of the SAC.</b></p>
<p>Union Wood SAC [000638]</p> <p><b>Distance to site:</b> 4.4km</p>	<ul style="list-style-type: none"> <li>➤ Old sessile oak woods with Ilex and Blechnum in the British Isles [91A0]</li> </ul>	<p>Detailed conservation objectives for this site (Version 1, January 2021<sup>5</sup>) were reviewed as part of the assessment and are available at:</p>	<p>There will be no direct impact on the SAC as it is located entirely outside of the footprint of the proposed development.</p>

<sup>5</sup>.NPWS (2021) Conservation Objectives: Union Wood SAC 000638. Version 1. National Parks and Wildlife Service, Department of Housing, Local Government and Heritage.



European Sites and distance from proposed development	Qualify Interests/Special Conservation Interests for which the European site has been designated (Sourced from NPWS online Conservation Objectives, www.npws.ie on the 03/03/22	Conservation Objectives	Likely Zone of Impact Determination
		<a href="https://www.npws.ie/sites/default/files/protected-sites/conservation_objectives/CO000638.pdf">https://www.npws.ie/sites/default/files/protected-sites/conservation_objectives/CO000638.pdf</a>	<p>Due to the intervening distance, the nature and the small scale of the proposed works, there is no pathway for connectivity and no potential for indirect effects on the terrestrial habitats for which the SAC has been designated.</p> <p><b>This SAC is <i>outside</i> the Likely Zone of Impact, no further assessment required.</b></p>
<p>Unshin River SAC [001898]</p> <p><b>Distance to site:</b> 5.0km</p>	<ul style="list-style-type: none"> <li>➤ Water courses of plain to montane levels with the Ranunculion fluitantis and Callitriche-Batrachion vegetation [3260]</li> <li>➤ Semi-natural dry grasslands and scrubland facies on calcareous substrates (Festuco-Brometalia) (* important orchid sites) [6210]</li> <li>➤ Molinia meadows on calcareous, peaty or clayey-silt-laden soils (Molinion caeruleae) [6410]</li> </ul>	<p>Detailed conservation objectives for this site (Version 1, Dec 2021<sup>6</sup>) were reviewed as part of the assessment and are available at:</p> <p><a href="https://www.npws.ie/sites/default/files/protected-sites/conservation_objectives/CO001898.pdf">https://www.npws.ie/sites/default/files/protected-sites/conservation_objectives/CO001898.pdf</a></p>	<p>There will be no direct impact on the SAC as it is located entirely outside of the footprint of the proposed development.</p> <p>Due to the intervening distance, the nature and the small scale of the proposed works, there is no potential for indirect effects on the terrestrial habitats for which the SAC has been designated.</p> <p>The proposed development site is located within a separate hydrological sub-catchment to the SAC. No hydrological connectivity to the SAC has been identified and there will be no effect on groundwater within the locality. No pathway for indirect effects on</p>

<sup>6</sup> NPWS (2021) Conservation Objectives: Unshin River SAC 001898. Version 1. National Parks and Wildlife Service, Department of Housing, Local Government and Heritage.

European Sites and distance from proposed development	Qualify Interests/Special Conservation Interests for which the European site has been designated (Sourced from NPWS online Conservation Objectives, www.npws.ie on the 03/03/22)	Conservation Objectives	Likely Zone of Impact Determination
	<ul style="list-style-type: none"> <li>➤ Alluvial forests with <i>Alnus glutinosa</i> and <i>Fraxinus excelsior</i> (Alno-Padion, Alnion incanae, Salicion albae) [91E0]</li> <li>➤ Salmon (<i>Salmo salar</i>) [1106]</li> <li>➤ Otter (<i>Lutra lutra</i>) [1355]</li> </ul>		<p>the aquatic dependant and marine habitats of the SAC exist.</p> <p>The development site does not provide supporting habitats for otter. Therefore, there is no potential for <i>in situ</i> disturbance of any QI species.</p> <p><b>The SAC is <i>outside</i> the Likely Zone of Impact, no further assessment is required.</b></p>
<p>Ben Bulbin, Gleniff and Glenade Complex SAC [000623]</p> <p><b>Distance to site:</b> 9.4km</p>	<ul style="list-style-type: none"> <li>➤ Water courses of plain to montane levels with the Ranunculion fluitantis and Callitriche-Batrachion vegetation [3260]</li> <li>➤ Northern Atlantic wet heaths with <i>Erica tetralix</i> [4010]</li> <li>➤ European dry heaths [4030]</li> <li>➤ Alpine and Boreal heaths [4060]</li> <li>➤ <i>Juniperus communis</i> formations on heaths or calcareous grasslands [5130]</li> <li>➤ Semi-natural dry grasslands and scrubland facies on</li> </ul>	<p>Detailed conservation objectives for this site (Version 1, December 2021<sup>7</sup>) were reviewed as part of the assessment and are available at:</p> <p><a href="https://www.npws.ie/sites/default/files/protected-sites/conservation_objectives/CO000623.pdf">https://www.npws.ie/sites/default/files/protected-sites/conservation_objectives/CO000623.pdf</a></p>	<p>There will be no direct impact on the SAC as it is located entirely outside of the footprint of the proposed development.</p> <p>Due to the intervening distance, the nature and the small scale of the proposed works, there is no potential for indirect effects on the terrestrial habitats for which the SAC has been designated.</p> <p>The proposed development site is located within a separate hydrological catchment to the SAC and no hydrological connectivity to the SAC exists. There will be no effect on groundwater within the locality and no</p>

<sup>7</sup> NPWS (2021) Conservation Objectives: Ben Bulbin, Gleniff and Glenade Complex SAC 000623. Version 1. National Parks and Wildlife Service, Department of Housing, Local Government and Heritage.



European Sites and distance from proposed development	Qualify Interests/Special Conservation Interests for which the European site has been designated (Sourced from NPWS online Conservation Objectives, www.npws.ie on the 03/03/22	Conservation Objectives	Likely Zone of Impact Determination
	<p>calcareous substrates (Festuco-Brometalia) (* important orchid sites) [6210]</p> <ul style="list-style-type: none"> <li>➤ Species-rich Nardus grasslands, on siliceous substrates in mountain areas (and submountain areas, in Continental Europe) [6230]</li> <li>➤ Hydrophilous tall herb fringe communities of plains and of the montane to alpine levels [6430]</li> <li>➤ Blanket bogs (* if active bog) [7130]</li> <li>➤ Transition mires and quaking bogs [7140]</li> <li>➤ Petrifying springs with tufa formation (Cratoneurion) [7220]</li> <li>➤ Alkaline fens [7230]</li> <li>➤ Siliceous scree of the montane to snow levels (Androsacetalia alpinae and Galeopsietalia ladani) [8110]</li> <li>➤ Calcareous and calcshist screes of the montane to</li> </ul>		<p>pathway for indirect effects on the aquatic dependant and marine habitats of the SAC exist.</p> <p>The site does not provide supporting habitats for otter. Therefore, there is no potential for <i>in situ</i> disturbance of any QI species.</p> <p><b>The SAC is <i>outside</i> the Likely Zone of Impact, no further assessment is required.</b></p>

European Sites and distance from proposed development	Qualify Interests/Special Conservation Interests for which the European site has been designated (Sourced from NPWS online Conservation Objectives, www.npws.ie on the 03/03/22	Conservation Objectives	Likely Zone of Impact Determination
	<ul style="list-style-type: none"> <li>alpine levels (<i>Thlaspietea rotundifolii</i>) [8120]</li> <li>➤ Calcareous rocky slopes with chasmophytic vegetation [8210]</li> <li>➤ Geyer's Whorl Snail (<i>Vertigo geyer</i>) [1013]</li> <li>➤ Otter (<i>Lutra lutra</i>) [1355]</li> </ul>		
<b>Special Protection Areas (SPA)</b>			
<p>Cummeen Strand SPA [004035]</p> <p><b>Distance to site:</b> 2.7km</p>	<ul style="list-style-type: none"> <li>➤ Light-bellied Brent Goose (<i>Branta bernicla hrota</i>) [A046]</li> <li>➤ Oystercatcher (<i>Haematopus ostralegus</i>) [A130]</li> <li>➤ Redshank (<i>Tringa totanus</i>) [A162]</li> <li>➤ Wetland and Waterbirds [A999]</li> </ul>	<p>Detailed conservation objectives for this site (September 2013<sup>8</sup>) were reviewed as part of the assessment and are available at:</p> <p><a href="https://www.npws.ie/sites/default/files/protected-sites/conservation_objectives/CO004035.pdf">https://www.npws.ie/sites/default/files/protected-sites/conservation_objectives/CO004035.pdf</a></p>	<p>There will be no direct effects on the SPA as it is located entirely outside of the footprint of the proposed development. Due to the intervening distance from the SPA and the scale of the proposed development, there is no potential for <i>in situ</i> or <i>ex situ</i> disturbance of SCI species, or for significant loss of supporting habitat for the SCI species.</p> <p>The site did not provide optimal habitat for the SCI species and no SCI species were recorded utilising the site during the bird surveys carried. No connectivity between the SPA and the site was recorded. There is</p>

<sup>8</sup> : NPWS (2013) Conservation Objectives: Cummeen Strand SPA 004035. Version 1. National Parks and Wildlife Service, Department of Arts, Heritage and the Gaeltacht.



European Sites and distance from proposed development	Qualify Interests/Special Conservation Interests for which the European site has been designated (Sourced from NPWS online Conservation Objectives, www.npws.ie on the 03/03/22	Conservation Objectives	Likely Zone of Impact Determination
			<p>judged to be no potential for in situ or ex situ disturbance of SCI species, or for significant loss of supporting habitat for SCI species.</p> <p>This SPA partially shares the same catchment as the proposed development. Taking a precautionary approach, a potential pathway for indirect effects was identified in the form of deterioration of water quality resulting from pollution associated with the construction and operational phases of the development.</p> <p>Deterioration of water quality may result in adverse effects on the following SCI in the absence of mitigation:</p> <ul style="list-style-type: none"> <li>• Wetland and Waterbirds [A999]</li> </ul> <p>This SCI includes the supporting wetland habitat of all SCI species.</p> <p><b>This SPA is <i>within</i> the Likely Zone of Impact and further assessment is required.</b></p>
Ballysadare Bay SPA	<p>➤ Light-bellied Brent Goose (<i>Branta bernicla hrota</i>) [A046]</p>		<p>There will be no direct impact on the SPA as it is located entirely outside of the footprint of the proposed development.</p>

European Sites and distance from proposed development	Qualify Interests/Special Conservation Interests for which the European site has been designated (Sourced from NPWS online Conservation Objectives, www.npws.ie on the 03/03/22	Conservation Objectives	Likely Zone of Impact Determination
<p>[004129]</p> <p><b>Distance to Site:</b> 4.0 km</p>	<ul style="list-style-type: none"> <li>➤ Grey Plover (<i>Pluvialis squatarola</i>) [A141]</li> <li>➤ Dunlin (<i>Calidris alpina</i>) [A149]</li> <li>➤ Bar-tailed Godwit (<i>Limosa lapponica</i>) [A157]</li> <li>➤ Redshank (<i>Tringa totanus</i>) [A162]</li> <li>➤ Wetland and Waterbirds [A999]</li> </ul>	<p>Detailed conservation objectives for this site (October 2013<sup>9</sup>) were reviewed as part of the assessment and are available at:</p> <p><a href="https://www.npws.ie/sites/default/files/protected-sites/conservation_objectives/CO004129.pdf">https://www.npws.ie/sites/default/files/protected-sites/conservation_objectives/CO004129.pdf</a></p>	<p>The site did not provide optimal habitat for the SCI species and no SCI species were recorded utilising the site during the bird surveys carried out. No connectivity between the SPA and the site was recorded. There is judged to be no potential for in situ or ex situ disturbance of SCI species, or for significant loss of supporting habitat for SCI species.</p> <p>This SPA is located within the same groundwater catchment as the proposed development. Taking a precautionary approach, a potential pathway for indirect effects was identified in the form of deterioration of water quality resulting from pollution associated with the construction and operational phases of the development.</p> <p>Deterioration of water quality may result in adverse effects on the following SCI in the absence of mitigation:</p> <ul style="list-style-type: none"> <li>• Wetland and Waterbirds [A999]</li> </ul>

<sup>9</sup> : NPWS (2013) Conservation Objectives: Ballysadare Bay SPA 004129. Version 1. National Parks and Wildlife Service, Department of Arts, Heritage and the Gaeltacht

European Sites and distance from proposed development	Qualify Interests/Special Conservation Interests for which the European site has been designated (Sourced from NPWS online Conservation Objectives, www.npws.ie on the 03/03/22	Conservation Objectives	Likely Zone of Impact Determination
			<p>This SCI includes the supporting wetland habitat of all SCI species.</p> <p><b>This SPA is <i>within</i> the Likely Zone of Impact and further assessment is required. This SPA is <i>outside</i> the Likely Zone of Impact, no further assessment required</b></p>
<p>Sligo/Leitrim Uplands SPA [004187]</p> <p><b>Distance to Site:</b> 7.4km</p>	<ul style="list-style-type: none"> <li>➤ Peregrine (<i>Falco peregrinus</i>) [A103]</li> <li>➤ Chough (<i>Pyrrhocorax pyrrhocorax</i>) [A346]</li> </ul>	<p>Generic conservation objectives for this site (March 2021<sup>10</sup>) were reviewed as part of the assessment and are available at:</p> <p><a href="https://www.npws.ie/sites/default/files/protected-sites/conservation_objectives/CO004187.pdf">https://www.npws.ie/sites/default/files/protected-sites/conservation_objectives/CO004187.pdf</a></p> <p>The objective is as follows: ‘To maintain or restore the favourable conservation condition of the bird species listed as Special Conservation Interests for this SPA’.</p>	<p>There will be no direct impact on the SPA as it is located entirely outside of the footprint of the proposed development.</p> <p>Given the absence of connectivity and suitable habitat for the SCI species within the site of the proposed development, as well as the intervening distance between the SPA the proposed development, no pathway for indirect effects relating to disturbance or displacement or loss of habitat exists.</p> <p>No potential pathway for direct or indirect effects on the SCI species exists.</p> <p><b>This SPA is <i>outside</i> the Likely Zone of Impact, no further assessment required</b></p>

<sup>10</sup> : NPWS (2021) Conservation objectives for Sligo/Leitrim Uplands SPA [004187]. Generic Version 8.0. Department of Housing, Local Government and Heritage.



European Sites and distance from proposed development	Qualify Interests/Special Conservation Interests for which the European site has been designated (Sourced from NPWS online Conservation Objectives, www.npws.ie on the 03/03/22	Conservation Objectives	Likely Zone of Impact Determination
<p>Drumcliff Bay SPA [004013]</p> <p><b>Distance to Site:</b> 7.5km</p>	<ul style="list-style-type: none"> <li>➤ Sanderling (<i>Calidris alba</i>) [A144]</li> <li>➤ Bar-tailed Godwit (<i>Limosa lapponica</i>) [A157]</li> <li>➤ Wetland and Waterbirds [A999]</li> </ul>	<p>Detailed conservation objectives for this site (September 2013<sup>11</sup>) were reviewed as part of the assessment and are available at:</p> <p><a href="https://www.npws.ie/sites/default/files/protected-sites/conservation_objectives/CO004013.pdf">https://www.npws.ie/sites/default/files/protected-sites/conservation_objectives/CO004013.pdf</a></p>	<p>There will be no direct impact on the SPA as it is located entirely outside of the footprint of the proposed development.</p> <p>The site did not provide optimal habitat for SCI species and no SCI species were recorded utilising the site during the surveys. No connectivity between the SCI species moving from the SPA to the site was recorded.</p> <p>The SPA is located in a different groundwater catchment to the proposed development. Therefore, there is no potential pathway for indirect effects.</p> <p><b>This SPA is <i>outside</i> the Likely Zone of Impact, no further assessment required</b></p>
		<p>Generic conservation objectives for this site</p>	

<sup>11</sup> : NPWS (2013) Conservation Objectives: Drumcliff Bay SPA 004013. Version 1. National Parks and Wildlife Service, Department of Arts, Heritage and the Gaeltacht.

European Sites and distance from proposed development	Qualify Interests/Special Conservation Interests for which the European site has been designated (Sourced from NPWS online Conservation Objectives, <a href="http://www.npws.ie">www.npws.ie</a> on the 03/03/22	Conservation Objectives	Likely Zone of Impact Determination
<p>Ballintemple and Ballygilgan SPA</p> <p>SPA [004234]</p> <p><b>Distance to Site:</b> 10.8km</p>	<p>➤ Barnacle Goose (<i>Branta leucopsis</i>) [A045]</p>	<p>(March 2021<sup>12</sup>) were reviewed as part of the assessment and are available at:</p> <p><a href="https://www.npws.ie/sites/default/files/protected-sites/conservation_objectives/CO004234.pdf">https://www.npws.ie/sites/default/files/protected-sites/conservation_objectives/CO004234.pdf</a></p> <p>The objective is as follows: To maintain or restore the favourable conservation condition of the bird species listed as Special Conservation Interests for this SPA’.</p>	<p>There will be no direct impact on the SPA as it is located entirely outside of the footprint of the proposed development.</p> <p>The site did not provide optimal habitat for the SCI species and the species was not recorded utilising the site during the bird surveys carried. No connectivity between the SPA and the site was recorded. There is judged to be no potential for in situ or ex situ disturbance of the SCI species, or for significant loss of supporting habitat for the SCI species.</p> <p><b>This SPA is <i>outside</i> the Likely Zone of Impact, no further assessment required</b></p>

<sup>12</sup> : NPWS (2021) Conservation objectives for Ballintemple and Ballygilgan SPA [004234]. Generic Version 8.0. Department of Housing, Local Government and Heritage.